

# Addendum 02

DOCUMENT 00 91 00

**DATE:** April 09, 2026

**PROJECT:** Mohawk Local Schools STEAM Renovation  
605 State Highway  
Sycamore, Ohio 44882

**PROJECT #:** 25047.03

**OWNER:** Mohawk Local Schools  
Contact: Andrew Sprang [andrew.sprang@mohawklocal.org](mailto:andrew.sprang@mohawklocal.org)  
295 State Route 231  
Sycamore, Ohio 44882

**ARCHITECT:** Garmann Miller  
38 South Lincoln Drive  
P.O. Box 71  
Minster, Ohio 45865

**TO:** Prospective Bidders

This addendum form is a part of the Contract Documents and modifies the Construction Documents dated March 20, 2026 with amendments and additions noted below.

Acknowledge receipt of this Addendum on the Bid Form. Failure to do so may disqualify the Bidder.

This addendum consists of 2 pages, 1 specification section, and 1 re-issued drawing sheet.

## FOR INFORMATION ONLY

### CHANGES TO THE PROJECT MANUAL

1. 01 21 00 – Allowances
  - a. Added \$10,000 as an allowance for use on vinyl graphics.



## **CHANGES TO THE DRAWINGS**

1. Drawing Sheet AD1.1 – Second Floor Demolition Plan
  - a. Added demo keynotes for flooring

## **ATTACHMENTS**

The following attachments are included and are part of this addendum:

Specification Sections: 01 21 00

Drawing Sheets: AD1.1

## **END OF ADDENDUM**



**SECTION 01 21 00  
ALLOWANCES**

**PART 1 GENERAL**

**1.01 SECTION INCLUDES**

- A. Cash allowances.
- B. Contingency allowance.
- C. Payment and modification procedures relating to allowances.

**1.02 RELATED REQUIREMENTS**

- A. Section 01 20 00 - Price and Payment Procedures: Additional payment and modification procedures.

**1.03 CASH ALLOWANCES**

- A. Costs Included in Cash Allowances: Cost of material or product to Contractor or subcontractor, less applicable trade discounts .
- B. Costs Not Included in Cash Allowances (included in the Base Bid): Product delivery to site and handling at the site, including unloading, uncrating, and storage; protection of products from elements and from damage; and labor for installation and finishing; overhead, profit and other expenses contemplated for this work.
- C. Architect Responsibilities:
  - 1. Consult with Contractor for consideration and selection of products .
  - 2. Select products in consultation with Owner and transmit decision to Contractor.
  - 3. Prepare Change Order.
- D. Contractor Responsibilities:
  - 1. Obtain proposals from suppliers and offer recommendations.
  - 2. On notification of which products have been selected, execute purchase agreement with designated supplier .
  - 3. Arrange for and process shop drawings, product data, and samples. Arrange for delivery.
  - 4. Promptly inspect products upon delivery for completeness, damage, and defects. Submit claims for transportation damage.
- E. Differences in costs will be adjusted by Change Order.

**1.04 CONTINGENCY ALLOWANCE**

- A. Contractor's costs for products, delivery, installation, labor, insurance, payroll, taxes, bonding, equipment rental, will be included in Change Orders authorizing expenditure of funds from this Contingency Allowance.
  - 1. All overhead and profit contemplated for the Work performed under each Allowance is to be included in the Base Bid.
- B. Funds will be drawn from the Contingency Allowance by Change Order.
- C. At closeout of Contract, funds remaining in Contingency Allowance will be credited to Owner by Change Order.

**1.05 ALLOWANCES SCHEDULE**

- A. Contingency Allowance: General Contract - A; Include the stipulated sum/price of \$10,000.00 for use upon Owner's instructions.
- B. Contingency Allowance: General Contract - A; Include the stipulated sum/price of \$10,000.00 for use on vinyl graphics.

**PART 2 PRODUCTS - NOT USED**  
**PART 3 EXECUTION - NOT USED**

**END OF SECTION**

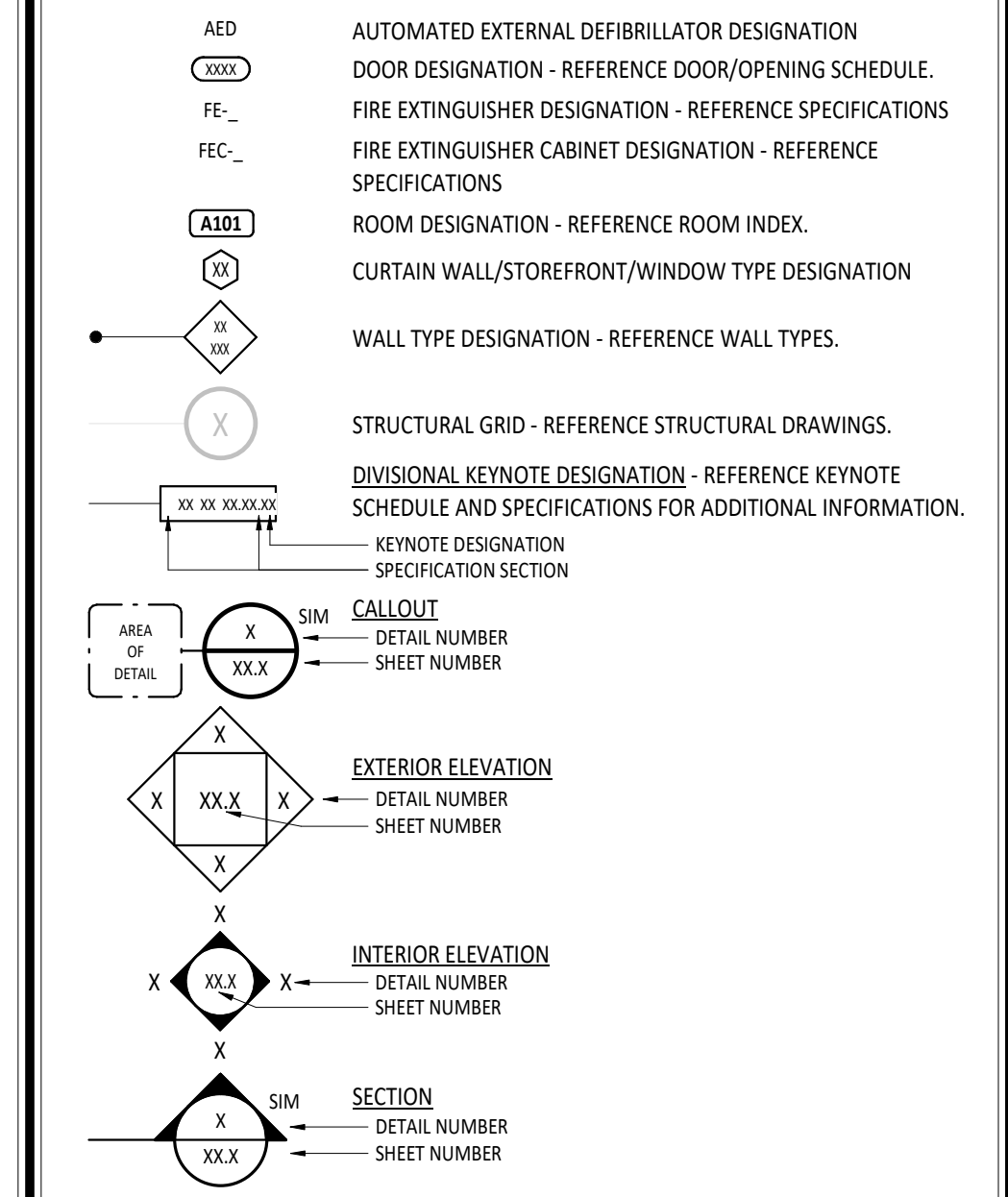
**DEMOLITION FLOOR PLAN GENERAL NOTES**

- A THESE NOTES APPLY TO ALL ARCHITECTURAL DRAWINGS. FOR DEMOLITION NOTES AND SYMBOLS APPLICABLE ONLY TO DRAWINGS OF DISCIPLINE OTHER THAN ARCHITECTURAL, REFER TO SPECIFIC DRAWINGS OF THAT GENERAL DEMOLITION NOTES DISCIPLINE.
- B FIELD VERIFY CONDITIONS AND COORDINATE DEMOLITION OR REMOVAL WORK WITH CORRESPONDING NEW CONSTRUCTION WORK AND WITH ALL APPROPRIATE TRADES PRIOR TO STARTING DEMOLITION WORK. IF DISCREPANCIES ARE FOUND BETWEEN CONTRACT DOCUMENTS AND ACTUAL FIELD CONDITIONS, NOTIFY ARCHITECT IMMEDIATELY.
- C OWNER SHALL REMOVE LOOSE ITEMS, I.E. EQUIPMENT, FURNITURE, ARTWORK, PLAQUES, ETC., PRIOR TO CONTRACTOR'S START OF WORK IN SPECIFIED AREAS. WHERE PARTIAL OCCUPANCY, CONTRACTOR SHALL COORDINATE SCHEDULE WITH OWNER.
- D REMOVE ITEMS TO BE DEMOLISHED IN THEIR ENTIRETY UNLESS OTHERWISE NOTED. DESCRIPTION OF PRIMARY ITEMS TO BE REMOVED IS GENERAL IN NATURE, AND REMOVAL OF SECONDARY COMPONENTS SUCH AS BLOCKING, SUPPORTS, ANCHORS, TRIM, ADHESIVE, PIPING, WIRING, ETC., RELATED TO PRIMARY ITEMS SHALL BE INCLUDED.
- E PROTECT EXISTING SURFACES TO REMAIN IN AREAS ADJACENT TO DEMOLITION WORK. CONTRACTOR TO REPAIR EXISTING SURFACES TO REMAIN DAMAGED DURING CONSTRUCTION AND DEMOLITION.
- F PATCH EXISTING FLOOR, WALL AND CEILING CONSTRUCTION AT ABANDONED PENETRATION LOCATIONS WITH NEW MATERIALS AS REQUIRED TO RECEIVE NEW FINISHES AND TO MAINTAIN ORIGINAL FIRE RATING ASSEMBLY WHERE APPLICABLE.
- G SELECTIVE DEMOLITION FOR INSTALLATION OF NEW MECHANICAL, PLUMBING, OR ELECTRICAL WORK SHALL BE THE RESPONSIBILITY OF THE CONTRACTOR OR TRADE REQUIRING THE DEMOLITION.
- H DEMOLISHED MATERIALS ARE THE PROPERTY OF THE CONTRACTOR UNLESS NOTED OTHERWISE AND SHALL BE PROMPTLY DISPOSED OFF SITE IN A LEGAL MANNER.
- I REPAIR FINISHES AND SURFACES LEFT EXPOSED BY DEMOLITION OR REMOVAL OF EQUIPMENT USING NEW MATERIALS TO MATCH SURROUNDING SURFACES. REPAIR EXISTING FLOOR, BASE, WALL AND CEILING FINISHES TO CORRECT DEFECTS CAUSED OR EXPOSED BY DEMOLITION WORK OR EQUIPMENT REMOVAL. REPAIRED SURFACES SHALL BE SMOOTH AND UNDETECTABLE UNDER FINAL FINISHES. AREAS NOTED ON THE DWGS. TO BE REPAIRED OR PATCHED ARE GIVEN FOR REFERENCE AND SHALL NOT BE INTERPRETED TO LIMIT THE SCOPE OF WORK.
- J DIMENSIONAL INFORMATION FOR NEW OPENINGS INDICATED ON DEMOLITION DWGS. ARE APPROXIMATE AND REQUIRE FIELD VERIFICATION AND COORDINATION WITH NEW CONSTRUCTION.
- K PRIOR TO START OF DEMOLITION, DUST AND SOUND BARRIERS SHALL BE CONSTRUCTED.
- L PROPER EGRESS AND APPROVED BARRIERS MUST BE MAINTAINED THROUGHOUT THE DEMOLITION AREA AT ALL TIMES.
- M REMOVE DEBRIS DAILY.
- N OWNER WILL BE RESPONSIBLE FOR REMOVING ANY CASEWORK THEY WISH TO KEEP PRIOR TO THE START OF CONSTRUCTION.

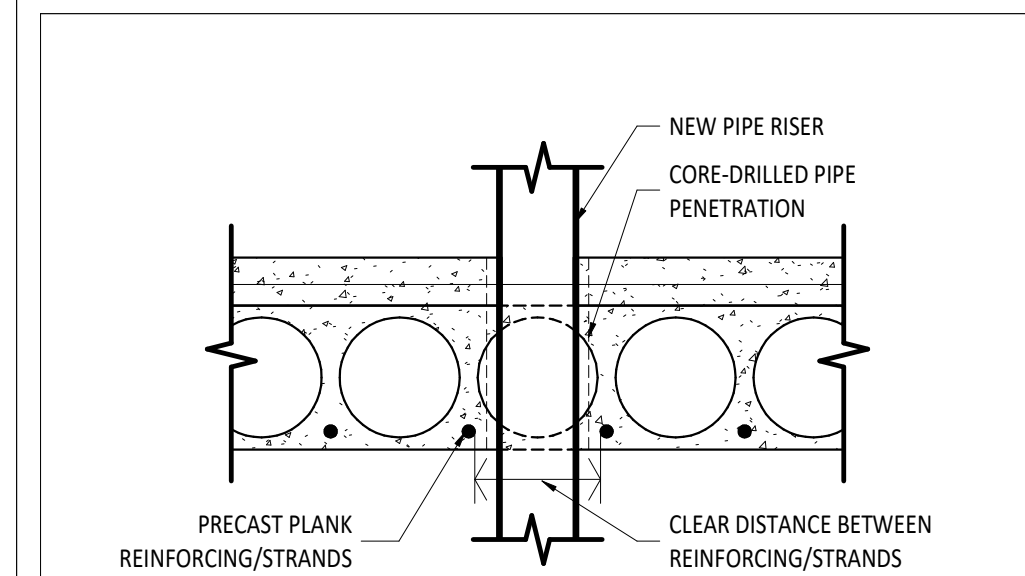
**SECOND FLOOR PLAN ROOM INDEX - UNIT A**

ROOM NUMBER	ROOM NAME	AREA
A209	CLASSROOM	1,068 SF
A210	CLASSROOM	858 SF
A211	CORRIDOR	2,568 SF
A212	TUTOR ROOM	113 SF
A213	SPECIAL ED ROOM	865 SF
A214	CLASSROOM	310 SF
A215	SPECIAL ED WORK ROOM	310 SF
A216	SPECIAL ED ROOM	363 SF
A217	CUSTODIAL	129 SF
A218	MECHANICAL	402 SF
A219	MECHANICAL/ELECTRICAL	1,908 SF
A220	WORKROOM	292 SF
A220A	STORAGE	147 SF
A221A	MAKERS	1,224 SF
A221B	LEGO	423 SF
A221C	INTERACTIVE CLASSROOM	1,204 SF
A221D	ROBOTICS	477 SF
A221E	HORTICULTURE	197 SF
A222	WORKROOM	444 SF
A223	STORAGE	298 SF
A224	RESTROOM	43 SF
A225	ELEVATOR	52 SF
A226	STAIR	401 SF
B202	CORRIDOR	1,686 SF
B215	TECH ROOM	354 SF
B216	LOUNGE	738 SF
B217A	RESTROOM VESTIBULE	110 SF
B217B	BOYS RESTROOM	312 SF
B217C	WOMENS RESTROOM	314 SF
B217D	PLUMBING CHASE	67 SF
B218	CORRIDOR	594 SF
B219	OFFICE	121 SF
B220A	CIRCULATION	148 SF
B220B	RECEPTION	74 SF
B221	OFFICE	158 SF
B222A	OFFICE	99 SF
B222B	MAIL	82 SF
B223	VAULT	80 SF

**FLOOR PLAN SYMBOLS LEGEND**

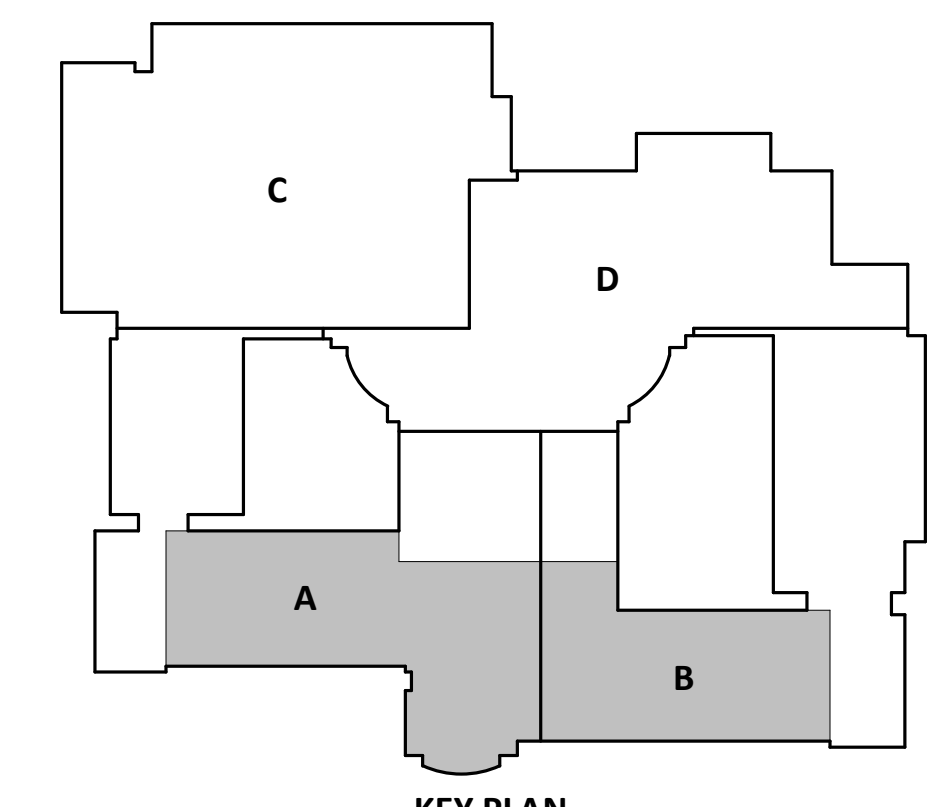


#	KEYNOTE DESCRIPTION
02 41 00 D1	REMOVE PORTION OF EXISTING CONCRETE MASONRY UNIT WALL
02 41 00 H1	REMOVE EXISTING DOOR AND FRAME
02 41 00 H2	REMOVE EXISTING DOOR, FRAME TO REMAIN.
02 41 00 H3	REMOVE EXISTING WINDOW
02 41 00 I1	REMOVE EXISTING PARTITION WALLS
02 41 00 I3	REMOVE EXISTING FLOOR TIERS.
02 41 00 I5	REMOVE EXISTING FLOORING. PREPARE AREA TO RECEIVE NEW FLOORING.
02 41 00 L1	REMOVE EXISTING CASEWORK
02 41 00 L2	SALVAGE EXISTING GRILL IN TOE KICK FOR REINSTALLATION IN NEW CASEWORK.
02 41 00 L3	PROTECT SILL DURING DEMOLITION. TEMPORARILY SUPPORT AS REQUIRED UNTIL NEW CASEWORK IS INSTALLED. PREPARE TO RECEIVE NEW FINISH. REFERENCE AS SHEETS.

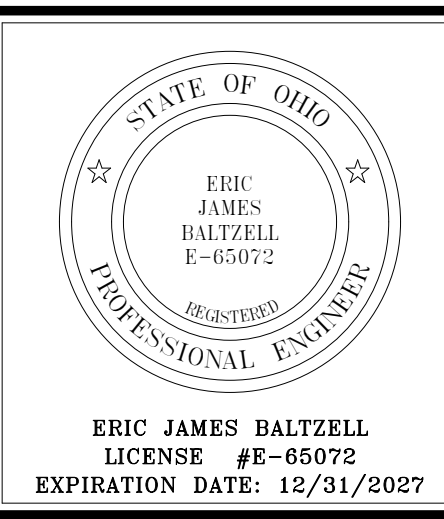


- NOTES:**
- SCAN LOCATIONS OF EXISTING REINFORCING/STRANDS PRIOR TO CORE DRILLING.
  - COORDINATE ALL PENETRATIONS WITH APPROPRIATE TRADE CONTRACTOR.
  - ALL PENETRATIONS ARE TO FIT BETWEEN EXISTING REINFORCING/STRANDS.
  - DO NOT CUT EXISTING REINFORCING/STRANDS.

**2 TYPICAL PIPE PENETRATION THROUGH PRECAST PLANK**  
1 1/2" = 1'-0"



**1 SECOND FLOOR DEMOLITION PLAN**  
1/8" = 1'-0"



**MOHAWK LOCAL SCHOOLS  
STEAM RENOVATION**

**ISSUANCES/REVISIONS**

CONSTRUCTION DOCUMENTS	03/20/2025
CONSTRUCTION DOCUMENTS - ADDENDUM #02	04/09/2025

**PROJECT NUMBER: 25047.03**

**DRAWN BY: zlw**      **CHECKED BY: bcw**

**SHEET TITLE:  
SECOND FLOOR  
DEMOLITION PLAN**

**SHEET NUMBER:  
AD1.1**