

Addendum 02

DOCUMENT 00 91 00

DATE: June 11, 2026

PROJECT: Huron County Jail Visitation Renovation
255 Shady Lane Drive
Norwalk, Ohio 44857

PROJECT #: 25095.00

OWNER: Board of Huron County Commissioners
Contact: Vickie Ziemba
180 Milan Ave. Ste. 7
Norwalk, OH 44857

ARCHITECT: Garmann Miller
38 South Lincoln Drive
P.O. Box 71
Minster, Ohio 45865

TO: Prospective Bidders

This addendum form is a part of the Contract Documents and modifies the Construction Documents dated April 16, 2026, with amendments and additions noted below.

Acknowledge receipt of this Addendum on the Bid Form. Failure to do so may disqualify the Bidder.

This addendum consists of 2 pages, 2 specification sections, 3 re-issued drawing sheets.

FOR INFORMATION ONLY

1. General Contractor to provide temporary bracing while above ceiling work is performed.

CHANGES TO THE PROJECT MANUAL

1. Table of Contents – Added specification section 08 71 00.
2. 08 71 00 – Added specification section in its entirety.



CHANGES TO THE DRAWINGS

1. G1.0 CODE PLAN
 - a. Reversed swing of doors into rooms B22 and B53.
2. A1.0 FIRST FLOOR PLAN – OVERALL
 - a. Reversed swing of doors into rooms B22 and B53.
3. A1.1 ENLARGED DEMOLITION PLAN AND FLOOR PLAN
 - a. Reversed swing of doors into rooms B22 and B53.

ATTACHMENTS

The following attachments are included and are part of this addendum:

Specification Sections: Table of Contents, 08 71 00

Drawing Sheets: G1.0, A1.0, A1.1

END OF ADDENDUM



TABLE OF CONTENTS

DIVISION 00 - PROCUREMENT AND CONTRACTING REQUIREMENTS

00 11 13	ADVERTISEMENT FOR BIDS
00 11 30	ABBREVIATED SCOPE OF WORK
00 21 13	AIA A701 INSTRUCTIONS TO BIDDERS
00 22 13	SUPPLEMENTARY INSTRUCTIONS TO BIDDERS
00 41 13	BID FORM
00 45 19	NON-COLLUSION AFFIDAVIT
00 45 21	CONTRACTOR'S AFFIDAVIT
00 50 00	CONTRACTING FORMS AND SUPPLEMENTS
00 52 13	AIA A101 STANDARD FORM OF AGREEMENT
00 61 16	CONDITIONAL LIEN WAIVER AND RELEASE UPON PROGRESS PAYMENT
00 72 13	AIA A201 GENERAL CONDITIONS
00 73 00	SUPPLEMENTARY CONDITIONS

DIVISION 01 - GENERAL REQUIREMENTS

01 11 00	SUMMARY OF WORK
01 20 00	PRICE AND PAYMENT PROCEDURES
01 21 00	ALLOWANCES
01 30 00	ADMINISTRATIVE REQUIREMENTS
01 33 23	CONTRACTOR SUBMITTAL PAGE
01 43 00	QUALITY ASSURANCE
01 50 00	TEMPORARY FACILITIES AND CONTROLS
01 51 00	TEMPORARY UTILITIES
01 60 00	PRODUCT REQUIREMENTS
01 60 00.01	SUBSTITUTION REQUEST FORM
01 70 00	EXECUTION AND CLOSEOUT REQUIREMENTS
01 78 00	CLOSEOUT SUBMITTALS
01 79 00	DEMONSTRATION AND TRAINING

DIVISION 02 - EXISTING CONDITIONS

02 41 00	DEMOLITION
----------	------------

DIVISION 03 - CONCRETE

03 35 11	CONCRETE FLOOR FINISHES
03 54 00	CAST UNDERLAYMENT

DIVISION 04 - MASONRY

- 04 01 00 MASONRY RESTORATION
- 04 05 13 MASONRY MORTARING
- 04 05 16 MASONRY GROUTING
- 04 05 19 MASONRY ANCHORAGE & REINFORCING
- 04 20 00 UNIT MASONRY

DIVISION 05 - METALS

- 05 50 00 METAL FABRICATIONS

DIVISION 07 - THERMAL AND MOISTURE PROTECTION

- 07 21 19 FOAMED-IN-PLACE INSULATION
- 07 84 00 FIRESTOPPING
- 07 92 00 JOINT SEALANTS

DIVISION 08 - OPENINGS

- 08 11 13 HOLLOW METAL DOORS AND FRAMES
- 08 71 00 DOOR HARDWARE
- 08 80 00 GLAZING

DIVISION 09 - FINISHES

- 09 05 61 COMMON WORK RESULTS FOR FLOORING PREPARATION
- 09 65 13 RESILIENT BASE AND ACCESSORIES
- 09 68 13 TILE CARPETING
- 09 84 30 SOUND-ABSORBING WALL AND CEILING UNITS
- 09 91 23 INTERIOR PAINTING

DIVISION 10 - SPECIALTIES

- 10 14 67 TACTILE SIGNAGE

DIVISION 21 - FIRE SUPPRESSION

- 21 05 00 COMMON WORK RESULTS FOR FIRE SUPPRESSION
- 21 05 01 FIRE PROTECTION MATERIALS/METHODS
- 21 05 03 WORK IN EXISTING BUILDING

DIVISION 23 - HEATING, VENTILATING, AND AIR-CONDITIONING (HVAC)

- 23 05 01 MECHANICAL MATERIALS & METHODS
- 23 05 03 WORK IN EXISTING BUILDING
- 23 07 13 DUCT INSULATION

23 31 00 HVAC DUCTS AND CASINGS
23 33 00 AIR DUCT ACCESSORIES
23 37 00 AIR OUTLETS AND INLETS

DIVISION 26 - ELECTRICAL

26 01 01 GENERAL PROVISIONS
26 05 03 WORK IN EXISTING BUILDINGS
26 05 05 MINOR ELECTRICAL DEMOLITION
26 05 06 TEMPORARY WORK
26 05 19 CONDUCTORS
26 05 26 GROUNDING AND BONDING
26 05 29 HANGERS AND SUPPORTS
26 05 33.13 CONDUIT
26 05 33.16 BOXES
26 05 33.23 SURFACE RACEWAYS FOR ELECTRICAL SYSTEMS
26 05 50 BASIC MATERIALS AND METHODS
26 05 53 IDENTIFICATION
26 05 55 CONNECTORS
26 05 83 EQUIPMENT WIRING
26 09 23 LIGHTING CONTROL DEVICES
26 27 26 WIRING DEVICES
26 51 00 INTERIOR LIGHTING

DIVISION 27 - COMMUNICATIONS

27 15 13 HORIZONTAL COMMUNICATIONS CABLING

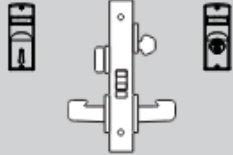
**SECTION 08 71 00
DOOR HARDWARE**

Set A

Openings B22, B23, B24 & B53 single interior 3'0 7'0 1-3/4" HMF x HMD

Each Opening To Have:

3 Hinges	TA2714 4-1/2" x 4-1/2"	26D	McKinney
1 Mortise Office Lock	8205 LNL less cylinder	26D	Sargent
1 Cylinders as required Match existing GMK			
1 Wall Stop	406	32D	Rockwood
3 Mutes	608		Rockwood

	<p>8205' 7805</p>	<p>Office or Entry</p>	<p>F04</p>	<ul style="list-style-type: none"> • Key outside retracts latchbolt, also locks & unlocks outside trim • Trim inside always retracts latchbolt, trim outside remains locked • Thumbturn inside locks & unlocks outside trim • Auxiliary deadlatch • A Multi-Function 8200/7800 Lockbody <p>The Multi-Function Advantage with rose trim:</p> <ol style="list-style-type: none"> 1. Lock will accommodate 04, 05, 15 & 37 functions without additional parts. 2. By adding an additional cylinder, lock will accommodate 38 function. 3. By adding a Trim One Side Kit, lock will accommodate 06, 13, 31 & 36 functions. <p>NOTE: Office/Entry Function with toggle is a 55 function.</p>
---	-----------------------	------------------------	------------	---

© COPYRIGHT 2025 - GARMANN MILLER & ASSOCIATES, INC.

CODE INFORMATION

BUILDING DESCRIPTION: EXISTING COUNTY JAIL

APPLICABLE CODE: 2024 OHIO BUILDING CODE
EXISTING CONDITIONS BASED ON 1995 CBC

OCCUPANCY / USE GROUP: BUSINESS (B)
INSTITUTIONAL (I-3) CONDITION 4

CONSTRUCTION TYPE: EXISTING 2C, NO CHANGE

OCCUPANT LOAD: 273 OCCUPANTS, NO CHANGE

BUILDING AREAS / HEIGHT: NO CHANGE

PLUMBING FIXTURES: NO CHANGE

NUMBER OF EXITS: NO CHANGE

OCCUPANCY TABULATION PER 2024 OBC TABLE 1004.5 - L1

ROOM NUMBER	NAME	AREA (GROSS)	OCCUPANTS
A00	VESTIBULE	129 SF	
A01	PUBLIC LOBBY	729 SF	
A02	CIVIL LOBBY	56 SF	
A03	CORR.	327 SF	
A04	CIVIL RECORDS PROCESS ROOM	719 SF	
A05	TLT.	38 SF	
A06	BREAK	35 SF	
A07	CORR.	77 SF	
A08	SHERIFF	239 SF	
A09	CONFERENCE	277 SF	
A10	CORR.	108 SF	
A11	CHIEF DEPUTY	168 SF	
A12	CL	15 SF	
A13	STOR.	15 SF	
A14	JAN.	31 SF	
A15	INTER.	62 SF	
A16	SUPER	304 SF	
A17	VIDEO EQ.	43 SF	
A18	CORR.	243 SF	

OCCUPANCY TABULATION PER 2024 OBC TABLE 1004.5 - L1

ROOM NUMBER	NAME	AREA (GROSS)	OCCUPANTS
A19	EQUIP.	80 SF	
A20	INTER.	69 SF	
A21	INVEST.	309 SF	
A22	VEST.	66 SF	
A23	STAFF LOBBY	261 SF	
A24	SUPER	100 SF	
A25	ROLL CALL	353 SF	
A26	ARMORY	69 SF	
A27	SHIFT LT.	136 SF	
A28	VEND.	115 SF	
A29	EVID. PKG.	51 SF	
A30	EVIDENCE	702 SF	
A31	DRUGS	34 SF	
A32	CORR.	93 SF	
A33	FEMALE LOCKER	211 SF	
A34	MALE LOCKER	416 SF	
A35	SHR.	37 SF	
A36	SHR.	77 SF	
A37	CORR.	127 SF	

OCCUPANCY TABULATION PER 2024 OBC TABLE 1004.5 - L1

ROOM NUMBER	NAME	AREA (GROSS)	OCCUPANTS
A38	MAIN CONTROL	254 SF	
A39	TLT.	26 SF	
A40	TLT.	41 SF	
A41	BREAK	171 SF	
A42	COMMUNICATIONS	457 SF	
A43	COMM. EQUIP.	176 SF	
A44	JAIL CLERK	72 SF	
A45	INTER.	67 SF	
A46	SUPPLY	76 SF	
A47	CORR.	80 SF	
A48	MENS	139 SF	
A49	WOMENS	140 SF	
A50	JAIL ADMIN.	205 SF	
A51	OFFICE	78 SF	
A52	S.P.	60 SF	
A53	TLT.	33 SF	
A55	MECHANICAL	1,084 SF	
A56	CORR.	260 SF	
B00	VEHICULAR SALLYPORT	1,084 SF	

OCCUPANCY TABULATION PER 2024 OBC TABLE 1004.5 - L1

ROOM NUMBER	NAME	AREA (GROSS)	OCCUPANTS
B01	GROUP HOLD.	121 SF	
B02	HOLD	65 SF	
B03	HOLD	60 SF	
B04	S.P.	106 SF	
B05	BREATH	66 SF	
B06	INT.	130 SF	
B07	LAW ENFORCE	81 SF	
B08	TLT.	37 SF	
B09	CORR.	58 SF	
B10	TLT.	38 SF	
B11	TLT.	39 SF	
B12	BOOKING	221 SF	
B13	WAITING	559 SF	
B14	HOLD	71 SF	
B15	HOLD	71 SF	
B16	CORR.	138 SF	
B17	FILES	152 SF	
B18	CLOTH ISSUE	87 SF	
B19	JAN.	17 SF	

OCCUPANCY TABULATION PER 2024 OBC TABLE 1004.5 - L1

ROOM NUMBER	NAME	AREA (GROSS)	OCCUPANTS
B20	SHR	23 SF	
B21	PROPERTY STORAGE	361 SF	
B22	OFFICE	147 SF	1
B23	OFFICE	147 SF	1
B24	CONTACT VISIT	92 SF	
B25	CORR.	433 SF	
B26	STOR.	318 SF	
B27	OFFICE	96 SF	
B28	TLT.	27 SF	
B29	WAIT.	206 SF	
B30	SHR.	10 SF	
B31	MED. CELL	113 SF	
B32	ANTE	16 SF	
B33A	MED. CELL	113 SF	
B34	SHR.	152 SF	2
B35	OFFICE	152 SF	
B36	CL.	15 SF	
B37	LAUNDRY	327 SF	
B38	DET. STOR.	25 SF	

OCCUPANCY TABULATION PER 2024 OBC TABLE 1004.5 - L1

ROOM NUMBER	NAME	AREA (GROSS)	OCCUPANTS
B39	CORR.	463 SF	
B40	MULTI-PURPOSE	809 SF	
B41	OFFICE	106 SF	
B42	LIBRARY	227 SF	
B43	CORR.	213 SF	
B44	FREEZER/COOLER	213 SF	
B45	CORR.	126 SF	
B46	TLT.	30 SF	
B47	JAN.	22 SF	
B48	DRY FOOD STOR.	245 SF	
B49	OFFICE	101 SF	
B50	KITCHEN	817 SF	
B51	WASHING	280 SF	
B52	COMM.	84 SF	
B53	OFFICE	210 SF	
C00	S.P.	140 SF	
C01	CORR.	83 SF	
C02	SLEEPING ROOM	309 SF	
C03	WOMENS WORK RELEASE 8 INMATES	379 SF	

OCCUPANCY TABULATION PER 2024 OBC TABLE 1004.5 - L1

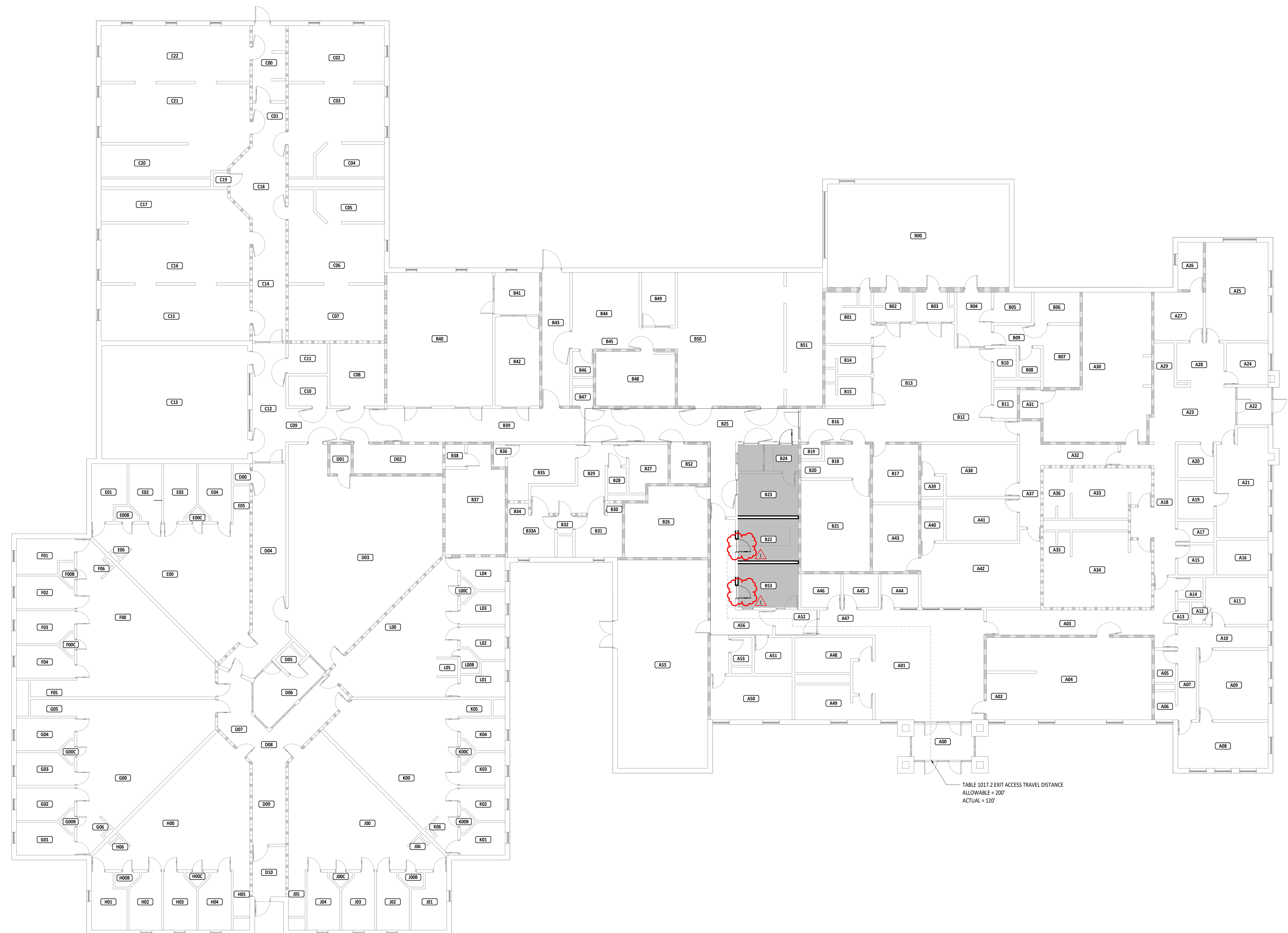
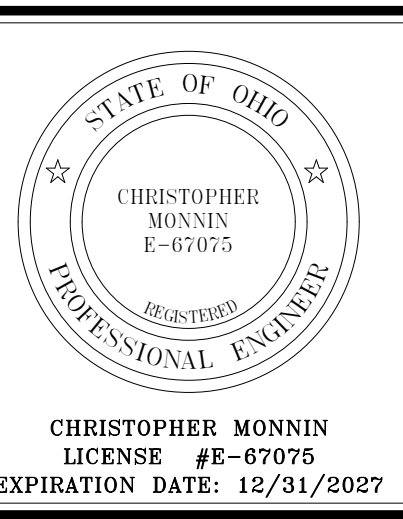
ROOM NUMBER	NAME	AREA (GROSS)	OCCUPANTS
C04	TOIL/SHR	126 SF	
C05	TOIL/SHR	123 SF	
C06	MALE TRUSTY 8 INMATES	302 SF	
C07	SLEEPING ROOM	309 SF	
C08	VIDEO ARRANG	196 SF	
C09	CORR.	189 SF	
C10	INTER.	67 SF	
C11	COUNS.	155 SF	
C12	CORR.	199 SF	
C13	OUTDOOR EXERCISE	951 SF	
C14	CORR.	228 SF	
C15	SLEEPING ROOM	479 SF	
C16	MALE SENTENCES M1SD: 12 INMATES	603 SF	
C17	TOIL/SHR	163 SF	
C18	CONTROL	101 SF	
C19	JAN.	12 SF	
C20	TOIL/SHR	160 SF	
C21	MENS WORK RELEASE 12 INMATES	758 SF	
C22	SLEEPING ROOM	479 SF	

OCCUPANCY TABULATION PER 2024 OBC TABLE 1004.5 - L1

ROOM NUMBER	NAME	AREA (GROSS)	OCCUPANTS
D00	JAN.	19 SF	
D01	STOR.	35 SF	
D02	STAIR 1	150 SF	
D03	INDOOR EXERCISE	1,372 SF	
D04	CORR.	429 SF	
D05	TLT.	22 SF	
D06	CONTROL	151 SF	
D07	CORR.	155 SF	
D08	CORR.	199 SF	
D09	CORR.	157 SF	
D10	S.P.	96 SF	
E00	FEMALE MIN/MAX 12 INMATES	759 SF	
E00B	PLUMB. CHASE	18 SF	
E00C	PLUMB. CHASE	12 SF	
E01	HC CELL	105 SF	
E02	CELL	101 SF	
E03	CELL	102 SF	
E04	CELL	102 SF	
E05	SHR	37 SF	
E06	TLT.	10 SF	
F00	MALE MEDIUM 16 INMATES	788 SF	
F00B	PLUMB. CHASE	17 SF	
F00C	PLUMB. CHASE	12 SF	
F01	HC CELL	105 SF	
F02	CELL	102 SF	
F03	CELL	102 SF	
F04	CELL	102 SF	
F05	SHR	45 SF	
F06	TLT.	10 SF	
G00	MALE MEDIUM 16 INMATES	767 SF	
G00B	PLUMB. CHASE	12 SF	
G00C	PLUMB. CHASE	12 SF	
G01	CELL	101 SF	
G02	CELL	101 SF	
G03	CELL	101 SF	
G04	CELL	101 SF	
G05	SHR	45 SF	

OCCUPANCY TABULATION PER 2024 OBC TABLE 1004.5 - L1

ROOM NUMBER	NAME	AREA (GROSS)	OCCUPANTS
G06	TLT.	10 SF	
H00	MALE MEDIUM 16 INMATES	758 SF	
H00B	PLUMB. CHASE	17 SF	
H00C	PLUMB. CHASE	13 SF	
H01	HC CELL	105 SF	
H02	CELL	101 SF	
H03	CELL	101 SF	
H04	CELL	101 SF	
H05	SHR	45 SF	
H06	TLT.	10 SF	
J00	MALE MEDIUM 16 INMATES	758 SF	
J00B	PLUMB. CHASE	17 SF	
J00C	PLUMB. CHASE	13 SF	
J01	HC CELL	105 SF	
J02	CELL	101 SF	
J03	CELL	101 SF	
J04	CELL	101 SF	
J05	SHR	45 SF	
J06	TLT.	10 SF	
K00	MALE MEDIUM 16 INMATES	710 SF	
K00B	PLUMB. CHASE	12 SF	
K00C	PLUMB. CHASE	12 SF	
K01	CELL	76 SF	
K02	CELL	76 SF	
K03	CELL	76 SF	
K04	CELL	76 SF	
K05	SHR	32 SF	
L00	MALE ADMIN. SEG. 8 INMATES	614 SF	
L00B	PLUMB. CHASE	23 SF	
L00C	PLUMB. CHASE	12 SF	
L01	HC CELL	75 SF	
L02	CELL	73 SF	
L03	CELL	76 SF	
L04	CELL	76 SF	
L05	SHR	20 SF	



- CODE PLAN LEGEND**
- (X) OCCUPANT LOAD THROUGH EXIT
 - 30" CLEAR EXIT WIDTH
 - ALLOWABLE NUMBER OF OCCUPANTS THROUGH EXIT
- OCCUPANCY GROUPS USED**
- B BUSINESS
 - I INSTITUTIONAL
- EXISTING 1 HOUR FIRE BARRIER (1FB)
 - EXISTING 3 HOUR FIRE BARRIER (3FB)
 - EXISTING 3 HOUR FIRE WALL (3FW)
 - EXISTING 1 HOUR SMOKE BARRIER (1SB)

TABLE 1017.2 EXIT ACCESS TRAVEL DISTANCE
ALLOWABLE = 200'
ACTUAL = 120'

HURON COUNTY JAIL VISITATION RENOVIATION

ISSUANCES/REVISIONS

CONSTRUCTION DOCUMENTS	04/16/2025
CONSTRUCTION DOCUMENTS - ADDENDUM 02	06/11/2025

PROJECT NUMBER: 25095.00

DRAWN BY: LAT

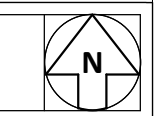
CHECKED BY: JS

SHEET TITLE:
CODE PLAN

SHEET NUMBER:
G1.0

PRINTED ON: 6/19/2025 2:09:47 PM

1
G1.0
FIRST FLOOR CODE PLAN
3/32" = 1'-0"



FIRST FLOOR PLAN ROOM INDEX - OVERALL		
ROOM NUMBER	ROOM NAME	AREA
A00	VESTIBULE	129 SF
A01	PUBLIC LOBBY	729 SF
A02	CIVIL LOBBY	56 SF
A03	CORR.	327 SF
A04	CIVIL RECORDS PROCESS ROOM	719 SF
A05	TLT.	38 SF
A06	BREAK	35 SF
A07	CORR.	77 SF
A08	SHERIFF	239 SF
A09	CONFERENCE	277 SF
A10	CORR.	108 SF
A11	CHIEF DEPUTY	168 SF
A12	CL.	15 SF
A13	STOR.	15 SF
A14	JAN.	31 SF
A15	INTER.	62 SF
A16	SUPER	104 SF
A17	VIDEO EQ.	43 SF
A18	BREAK	35 SF
A19	EQUIP.	80 SF
A20	INTER.	69 SF
A21	INVEST.	309 SF
A22	VEST.	66 SF
A23	STAFF LOBBY	261 SF
A24	SUPER	100 SF

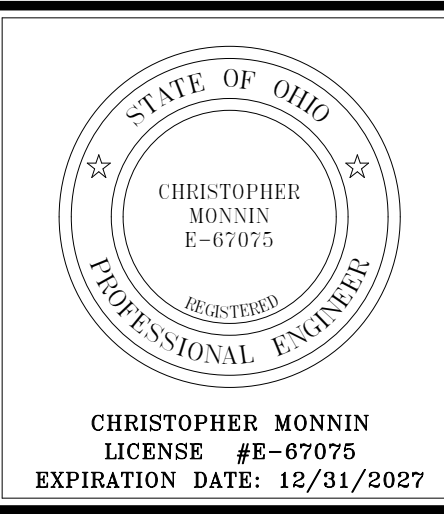
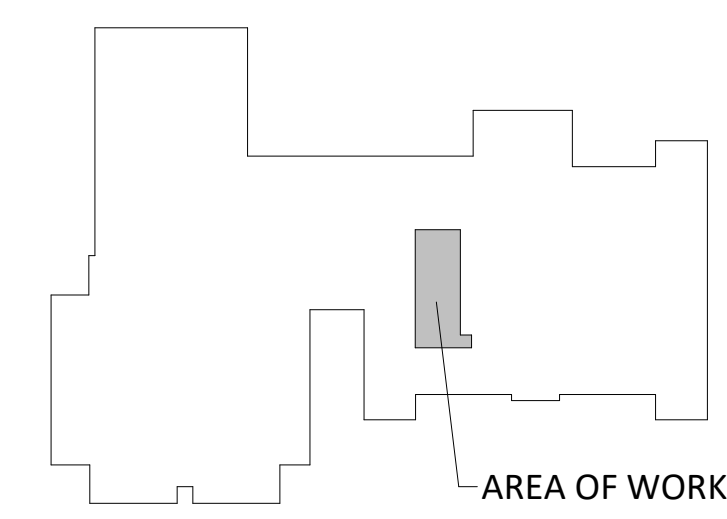
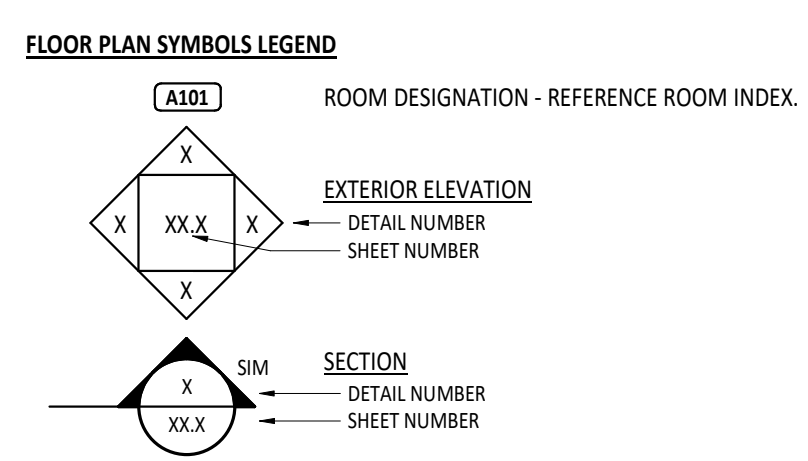
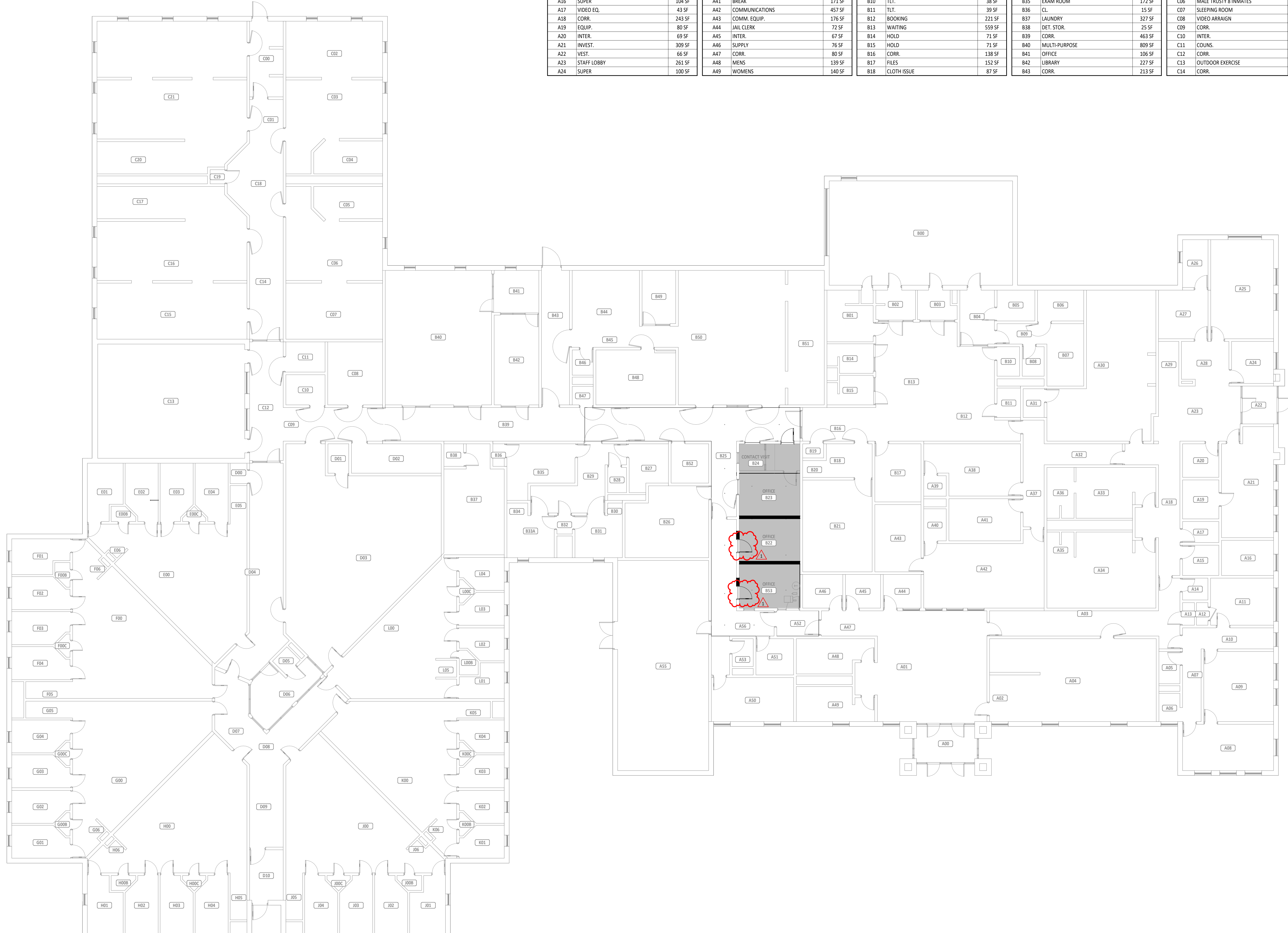
FIRST FLOOR PLAN ROOM INDEX - OVERALL		
ROOM NUMBER	ROOM NAME	AREA
A25	ROLL CALL	353 SF
A26	ARMORY	69 SF
A27	SHIFT LT.	136 SF
A28	VEND.	115 SF
A29	EVID. PKG.	51 SF
A30	EVIDENCE	702 SF
A31	DRUGS	34 SF
A32	CORR.	93 SF
A33	FEMALE LOCKER	211 SF
A34	MALE LOCKER	416 SF
A35	SHR.	37 SF
A36	SHR.	77 SF
A37	CORR.	127 SF
A38	MAIN CONTROL	254 SF
A39	TLT.	26 SF
A40	TLT.	41 SF
A41	BREAK	38 SF
A42	COMMUNICATIONS	457 SF
A43	COMM. EQUIP.	176 SF
A44	JAIL CLERK	72 SF
A45	INTER.	67 SF
A46	SUPPLY	76 SF
A47	CORR.	80 SF
A48	MENS	139 SF
A49	WOMENS	140 SF

FIRST FLOOR PLAN ROOM INDEX - OVERALL		
ROOM NUMBER	ROOM NAME	AREA
A50	JAIL ADMIN.	205 SF
A51	OFFICE	78 SF
A52	S.P.	60 SF
A53	TLT.	33 SF
A55	MECHANICAL	1,084 SF
A56	CORR.	260 SF
B00	VEHICULAR SALLYPORT	1,084 SF
B01	GROUP HOLD.	121 SF
B02	HOLD	65 SF
B03	HOLD	60 SF
B04	S.P.	106 SF
B05	BREATH	66 SF
B06	INT.	81 SF
B07	LAW ENFORCE	130 SF
B08	TLT.	37 SF
B09	CORR.	58 SF
B10	TLT.	38 SF
B11	TLT.	39 SF
B12	BOOKING	221 SF
B13	WAITING	559 SF
B14	HOLD	71 SF
B15	HOLD	71 SF
B16	CORR.	138 SF
B17	FILES	152 SF
B18	CLOTH ISSUE	87 SF

FIRST FLOOR PLAN ROOM INDEX - OVERALL		
ROOM NUMBER	ROOM NAME	AREA
B19	JAN.	17 SF
B20	SHR	23 SF
B21	PROPERTY STORAGE	361 SF
B22	OFFICE	147 SF
B23	OFFICE	147 SF
B24	CONTACT VISIT	92 SF
B25	CORR.	433 SF
B26	STOR.	318 SF
B27	OFFICE	96 SF
B28	TLT.	27 SF
B29	WAIT.	206 SF
B30	SHR.	10 SF
B31	MED. CELL	113 SF
B32	ANTE	16 SF
B33A	MED. CELL	113 SF
B34	SHR.	15 SF
B35	EXAM ROOM	172 SF
B36	CL.	15 SF
B37	LAUNDRY	327 SF
B38	DET. STOR.	25 SF
B39	CORR.	463 SF
B40	MULTI-PURPOSE	809 SF
B41	OFFICE	106 SF
B42	LIBRARY	227 SF
B43	CORR.	213 SF

FIRST FLOOR PLAN ROOM INDEX - OVERALL		
ROOM NUMBER	ROOM NAME	AREA
B44	FREEZER/COOLER	213 SF
B45	CORR.	126 SF
B46	TLT.	30 SF
B47	JAN.	22 SF
B48	DRY FOOD STOR.	245 SF
B49	OFFICE	101 SF
B50	KITCHEN	817 SF
B51	WASHING	280 SF
B52	COMM	84 SF
B53	OFFICE	152 SF
C00	S.P.	140 SF
C01	CORR.	83 SF
C02	SLEEPING ROOM	309 SF
C03	WOMENS WORK RELEASE 8 INMATES	379 SF
C04	TOIL/SHR	126 SF
C05	TOIL/SHR	123 SF
C06	MALE TRUSTY 8 INMATES	382 SF
C07	SLEEPING ROOM	309 SF
C08	VIDEO ARRAIGN	196 SF
C09	CORR.	189 SF
C10	INTER.	67 SF
C11	COLUNS.	67 SF
C12	CORR.	226 SF
C13	OUTDOOR EXERCISE	951 SF
C14	CORR.	228 SF

FIRST FLOOR PLAN ROOM INDEX - OVERALL		
ROOM NUMBER	ROOM NAME	AREA
C15	SLEEPING ROOM	479 SF
C16	MALE SENTENCES MI SD. 12 INMATES	603 SF
C17	TOIL/SHR	161 SF
C18	CONTROL	210 SF
C19	JAN.	12 SF
C20	TOIL/SHR	160 SF
C21	MENS WORK RELEASE 12 INMATES	595 SF
C22	SLEEPING ROOM	479 SF
D00	JAN.	19 SF
D01	STOR.	35 SF
D02	STAIR 1	150 SF
D03	INDOOR EXERCISE	1,372 SF
D04	CORR.	429 SF
D05	TLT.	22 SF
D06	CONTROL	151 SF
D07	CORR.	155 SF
D08	CORR.	199 SF
D09	CORR.	157 SF
D10	S.P.	96 SF
E00	FEMALE MIN/MAX 12 INMATES	759 SF
E00B	PLUMB. CHASE	18 SF
E00C	PLUMB. CHASE	12 SF
E01	HC CELL	105 SF
E02	CELL	101 SF
E03	CELL	102 SF
E04	CELL	102 SF
E05	SHR	37 SF
E06	TLT.	10 SF
F00	MALE MEDIUM 16 INMATES	788 SF
F00B	PLUMB. CHASE	17 SF
F00C	PLUMB. CHASE	12 SF
F01	HC CELL	105 SF
F02	CELL	102 SF
F03	CELL	102 SF
F04	CELL	102 SF
F05	SHR	45 SF
F06	TLT.	10 SF
G00	MALE MEDIUM 16 INMATES	767 SF
G00B	PLUMB. CHASE	12 SF
G00C	PLUMB. CHASE	12 SF
G01	CELL	101 SF
G02	CELL	101 SF
G03	CELL	101 SF
G04	CELL	101 SF
G05	SHR	45 SF
G06	TLT.	10 SF
H00	MALE MEDIUM 16 INMATES	758 SF
H00B	PLUMB. CHASE	17 SF
H00C	PLUMB. CHASE	13 SF
H01	HC CELL	105 SF
H02	CELL	101 SF
H03	CELL	101 SF
H04	CELL	101 SF
H05	SHR	45 SF
H06	TLT.	10 SF
J00	MALE MEDIUM 16 INMATES	758 SF
J00B	PLUMB. CHASE	17 SF
J00C	PLUMB. CHASE	13 SF
J01	HC CELL	105 SF
J02	CELL	101 SF
J03	CELL	101 SF
J04	CELL	101 SF
J05	SHR	45 SF
J06	TLT.	10 SF
K00	MALE MEDIUM 16 INMATES	710 SF
K00B	PLUMB. CHASE	12 SF
K00C	PLUMB. CHASE	12 SF
K01	CELL	76 SF
K02	CELL	76 SF
K03	CELL	76 SF
K04	CELL	76 SF
K05	SHR	32 SF
K06	TLT.	10 SF
L00	MALE ADMIN. SEG. 8 INMATES	614 SF
L00B	PLUMB. CHASE	23 SF
L00C	PLUMB. CHASE	12 SF
L01	HC CELL	75 SF
L02	CELL	73 SF
L03	CELL	76 SF
L04	CELL	76 SF
L05	SHR	20 SF



HURON COUNTY JAIL VISITATION RENOVIATION

255 SANDY LAKE DRIVE, NORWALK, OHIO 44867

ISSUANCES/REVISIONS		
1	CONSTRUCTION DOCUMENTS - ADDENDUM 02	06/18/2025 06/11/2025

PROJECT NUMBER: 25095.00	DRAWN BY: LAT	CHECKED BY: JS
--------------------------	---------------	----------------

SHEET TITLE:
FIRST FLOOR PLAN - OVERALL

SHEET NUMBER:
A1.0

